

BAPTIST HOSPITAL

The New Baptist Hospital Campus

Now Open at Brent Lane and I-110

BAPTIST HOSPITAL MAIN ENTRANCE

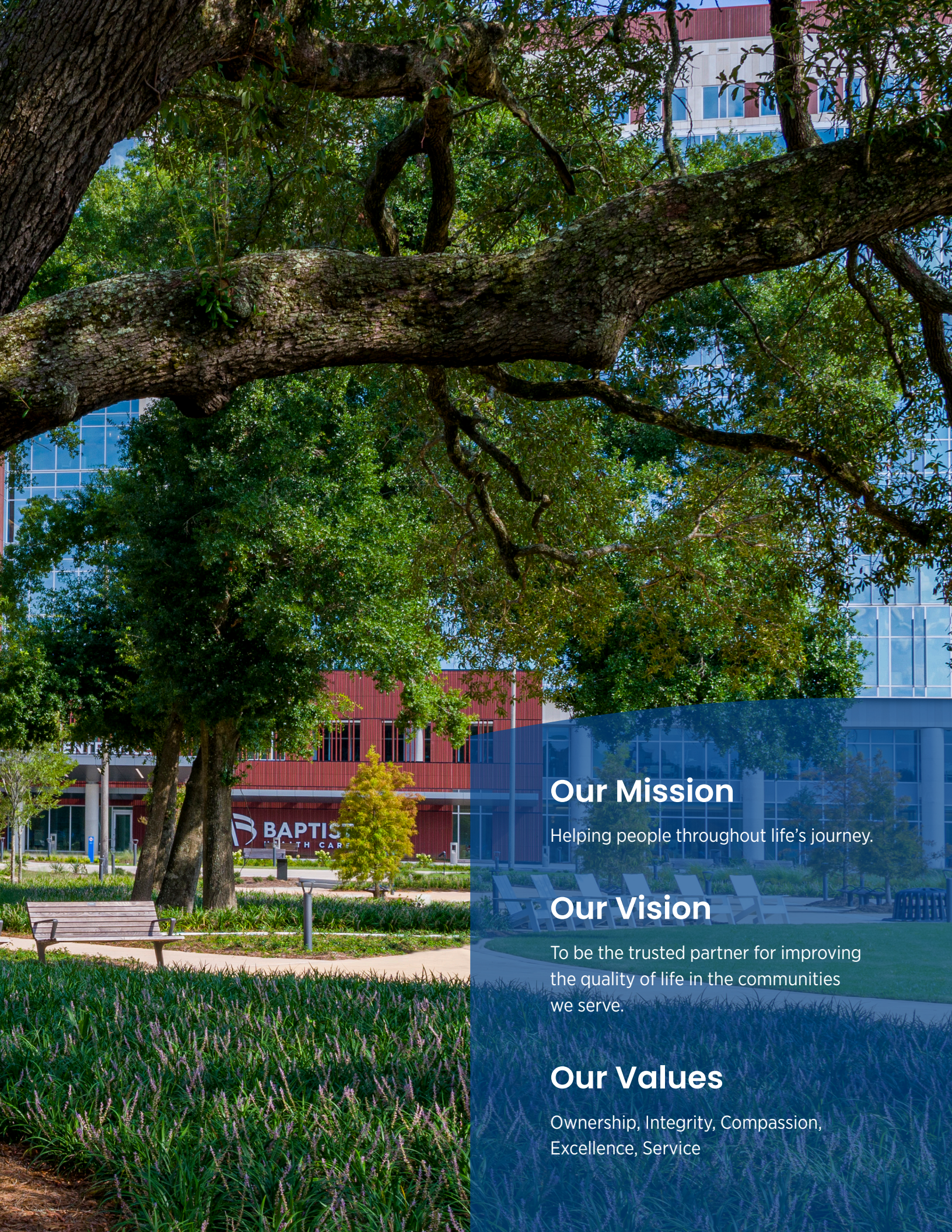
BAPTIST
HEALTH CARE

 **BAPTIST**
HEALTH CARE
ebaptisthealthcare.org



I HEALTH CE

BAPTIST HOSPI



Our Mission

Helping people throughout life's journey.

Our Vision

To be the trusted partner for improving the quality of life in the communities we serve.

Our Values

Ownership, Integrity, Compassion, Excellence, Service

BAPTIST HOSPITAL





Welcome to Your New Hospital Campus

We are so proud to introduce you to the new Baptist Hospital campus. We are thrilled to provide the compassionate, patient-centered care you know and trust in a beautiful environment to match. Our new location is one-of-a-kind. We are proud to commission this \$650 million investment in health care, the single largest in the history of our region. The new campus is thoughtfully designed to nurture well-being and a sense of calm in a healing environment for our patients and their families. It is also a world-class workplace environment. Leading-edge technologies combined with the capable hands of our experienced and compassionate team members truly transform care in our community.

Baptist Health Care is the region's only locally led and governed, not-for-profit health system. As our founders did when they first brought Baptist Hospital to Pensacola in 1951, we are fulfilling our community's need for a higher level of health care accessibility, technology, service and quality. On behalf of all of us at Baptist Health Care, thank you for allowing us to serve you and your loved ones. We are honored to continue the legacy of our founders and to be entrusted with caring for our community.

Most sincerely,

A handwritten signature in blue ink, appearing to read "Mark J. Jalko". The signature is fluid and cursive.





Our Team Members Make the Difference

Compassionate.

Skilled.

Dedicated.

We are excited about our new Baptist Hospital campus, yet we know it's the people inside who make the difference. Our dedicated team offers lifesaving innovations and sets the standard for excellence in health care. We are grateful for these individuals throughout our organization who live our Values of Ownership, Integrity, Compassion, Excellence and Service.

The Campus

Beautiful.

Welcoming.

Convenient.

The new Baptist Hospital campus is centrally located in our community, providing convenient access to patient-centered care. As you enter the campus from Brent Lane, you are greeted by a beautiful town square with heritage oaks, walking paths and beautiful native plants and a prayer labyrinth. Free valet makes arrival a breeze for both Baptist Hospital and the Bear Family Foundation Health Center. Valet, convenient parking and destinations within the facilities are easy to find with well-placed signs for wayfinding. And our culture-driven, supportive team members are glad to help you find your way.

Baptist Hospital

Innovative.

Intuitive.

Unrivaled.

The new Baptist Hospital is unlike any other you've ever experienced. Every detail in its design is purposefully and thoughtfully executed to create the ultimate healing and supportive environment. Patients are in close proximity to their care teams to facilitate greater communication and response time. Treatment spaces are standardized to ensure a consistent positive experience for every patient. Services, such as lab, imaging, therapy and pharmacy, are embedded in patient care areas to provide more efficient communication and delivery of care.

High-quality finishes, abundant natural light and soothing color palettes provide a sense of calm and comfort. Safe, well-lit and intuitive access allow for peace of mind and as you heal.





1st floor

- Main entrance
- FPL Energy Café
- Cox Communications Café Garden
- Baptist Heart & Vascular Institute
 - Peacock Family Heart Center
- Lee Family Chapel
- Emergency Room
- Gift Shop
- Imaging
- Pick and Alberta Hollinger Donor Wall of Honor
- Registration

2nd floor

- Laboratory
- Sterile Processing Department
- Surgery and Interventional Suites
- Private Surgery Waiting Area
 - Named in Honor of the Rockhill Family

Patient Rooms

Expansive.
Comfortable.
Peaceful.

Patient rooms are located on floors 3 – 10. All are equal in size and configuration with ample space for families and visitors who are a crucial part of a patient's care team. Each room offers floor-to-ceiling windows for natural light and a sleeper sofa and workspace for visiting loved ones. Patients control the room environment, including lighting and temperature.





The 3rd floor Intensive Care Unit and 4th floor Progressive Care/Cardiovascular Step Down Unit rooms offer ceiling-mounted bed lifts, advanced monitoring capabilities and 24-hour intensivist coverage to best serve our critically ill patients who require higher-level nursing care.

3rd floor

- ICU – 36 beds for cardiovascular surgery, trauma, ECMO, critical patients
 - Nurse station perch located outside of each room to provide caregivers line-of-sight monitoring
- Dialysis
- Pharmacy
- Physical Therapy
- Respiratory Therapy

4th floor

- Progressive Care/Cardiovascular Step Down Unit – 36 beds

Mother Baby

Boutique-like.

Spacious.

Inviting.

Our new Mother Baby area on the 5th floor is fully dedicated to the exclusive, personal care of mom and baby. Every room is thoughtfully designed to enhance the comfort and safety of mom, baby and family members during the birthing experience and those precious first hours.

5th floor

- Hunt Family Birth Center
- 12 suites for labor, delivery, recovery, postpartum care - with laboring tubs in each
- 4 Obstetric Emergency Rooms
- 2 C-Section Rooms
- Nursery





PLEASE READ INSTRUCTIONS CAREFULLY BEFORE USING THIS PRODUCT.

• Do not use on patients with known or suspected infection.	• Do not use on patients with known or suspected infection.
• Do not use on patients with known or suspected infection.	• Do not use on patients with known or suspected infection.
• Do not use on patients with known or suspected infection.	• Do not use on patients with known or suspected infection.
• Do not use on patients with known or suspected infection.	• Do not use on patients with known or suspected infection.

STRYKER

Floors 6 – 10

Our upper floors are specialized medical/surgical units featuring 36 patient rooms per floor. Each patient room features expansive windows, soothing colors, beautiful artwork and convenient access to all the quality care and support needed throughout a hospital stay.

6th floor

- Cardiovascular and Neurosciences Unit
 - Named in Honor of Marguerite W. M. Averett by the Averett Family

7th floor

- Orthopaedic and Neurosurgery Unit

8th floor

- General, Gynecological and Bariatric Surgery Unit

9th floor

- Medical Unit

10th floor

- Medical/Oncology Unit

Rooftop helipad





PLEASE ASSIST IN KEEPING YOUR ROOM CLEAN SO THAT YOU ARE ABLE TO HEAL IN SAFETY AND COMFORT.

EVERY DAY I WILL:

<input type="checkbox"/> Clean my hands	<input type="checkbox"/> Clean my room
<input type="checkbox"/> Empty trash can	<input type="checkbox"/> Check and rest room
<input type="checkbox"/> Sanitize all surfaces	<input type="checkbox"/> Thank you with a smile

Your room was cleaned on: _____

By: _____

If you need your bed linen changed, please ask your nurse. If your room does not meet your expectations, please call PatientHelping at 800.808.4999

RAPPORT



HEALTH CENTER

BEAR FAMILY FOUNDATION HEALTH CENTER

BAPTIST
Bear Health Center
100 Hospital Way



Bear Family Foundation Health Center

**Accessible.
Easy to Navigate.
Comprehensive.**

The Bear Family Foundation Health Center is named in honor of the Bear Family Foundation in recognition of their historic gift to Baptist Health Care. The Bear Family Foundation's Mission is to continue their tradition of philanthropic giving through financial donations and volunteerism in our communities from generation to generation. Also known as the Bear Health Center, this inviting building offers a multitude of outpatient services.



1st floor

Baptist Cancer Institute

For prevention, screening, diagnosis and treatment of cancer, we place patient experience front and center. Within Baptist Cancer Institute is the Kugelman Cancer Center, infusion center – chemotherapy, radiation therapy and Cancer Support Services. Baptist Medical Group – Hematology-Oncology and Radiation Oncology also are conveniently located in this space. Through collaboration, coordination and single-point-access, our incredible team provides compassionate care to help our community fight cancer.

- Appleyard Family Baptist History Wall
- Girish S. and Vimu G. Gupta Diagnostic Imaging Center
- Infusion Center
- Lab
- Panera Bread
- Registration
- Towers Pharmacy
- Women’s Imaging

2nd floor

- Cardiac Rehabilitation
- Conference Center
- Pre-Optimization/Pre-Surgery Clinic
- Weight-Loss Center (Bariatrics)

The Bear Health Center **Fitwel Rating** by Active Design is certification that shows we are promoting occupant health and well-being to support physical, mental and social health.





Leading-Edge Providers. And New Offices to Match.

3rd floor

Baptist Heart & Vascular Institute

Baptist Heart & Vascular Institute is comprised of the area's largest, most experienced team of cardiac care experts. A longtime leader in treating heart disease, BHVI continuously brings the latest techniques and technology to Northwest Florida and South Alabama residents in need of lifesaving cardiac care.

Our multidisciplinary team of cardiologists, electrophysiologists, interventionalists, cardiothoracic surgeons, clinical specialists and advanced practice providers now offer clinic visits at its new office on the 3rd floor of the Bear Health Center, in addition to its existing offices throughout the region.

- Enhanced Technology and Access
- Comfortable Offices and Exam Rooms
- Device Support
- Outpatient Testing/Procedures



Primary and Specialty Care

Our trusted physician and advanced practitioner network offers the quality care you need at convenient locations throughout the community. Our newest office locations are on the 4th and 5th floors of the Bear Health Center.

4th floor

- **Baptist Medical Group**
 - Gastroenterology
 - Neurosurgery
 - Primary Care
 - Rheumatology
 - Urology
- **Andrews Institute for Orthopaedics & Sports Medicine**
 - Orthopaedic Trauma
 - Physical Medicine and Rehabilitation

5th floor

- **Baptist Medical Group**
 - Endocrinology
 - ENT
 - General Surgery
 - Ladies First OB/GYN

6th floor

Offices and space for future growth





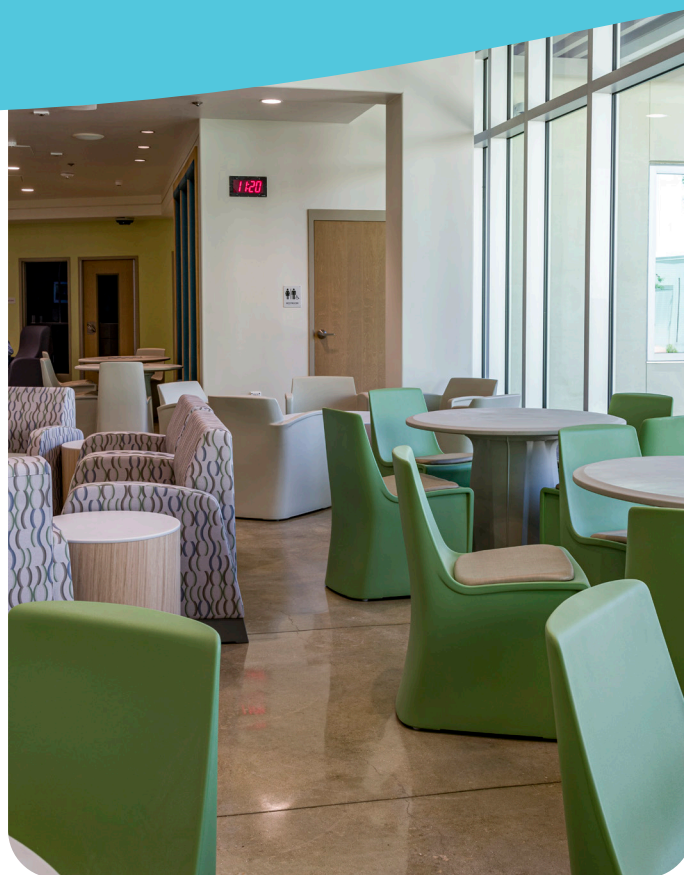
Baptist Hospital Behavioral Health Unit

Safe.

Peaceful.

Restorative.

Our Behavioral Health Unit is like no other in the Northwest Florida region. We've created a peaceful, serene environment to foster comfort and healing. It offers inpatient treatment spaces specially designed for individuals ages 4 and older. All patient care areas are brightly lit with access to outdoor spaces. The child/adolescent wing offers all private rooms, and the adult and geriatric areas are a combination of private and semi-private rooms.





72 beds

- **Child/Adolescent Wing**
 - **Named in Honor of Wendy & Joel Smith**
 - 12 children’s rooms
 - 14 adolescent rooms
 - **Child/Adolescent Day Room and Adolescent Courtyard**
 - **Named in Honor of D.W. McMillan Foundation**
- **Adult Wing and Multipurpose Room**
 - **Named in Honor of Quint & Rishy Studer**
 - 36 adult rooms
 - 10 senior adult rooms
 - **Adult Courtyard and Adult Garden**
 - **Named in Honor of Margaret & Harry Stopp**

Décor and Artwork

**Inspiring.
Beautiful.
Contemplative.**

From the color palette to the furniture to the fixtures to the artwork, we've created a setting that is modern, inviting and inspires a sense of community.

The artwork speaks to our local culture and community and reflects the natural surroundings of Northwest Florida. These creations are the work of many individuals, all of whom are local or regional artists, including Baptist Health Care team members. We thank all of the artists for their inspiring work that will be enjoyed for many years to come.





Our Project Partners

Expert.

Future-Focused.

Community-Oriented.

A world-class project like the new Baptist Hospital campus requires a world-class team. Our partners worked with our own Baptist Health Care team members to imagine and create the area's most modern health care campus that will serve our region for generations to come. These leaders in health care architecture, design, construction, technology, planning, moving and installation provided their technical expertise and so much more. These partners became part of our team and our community.

Gresham Smith — Architect

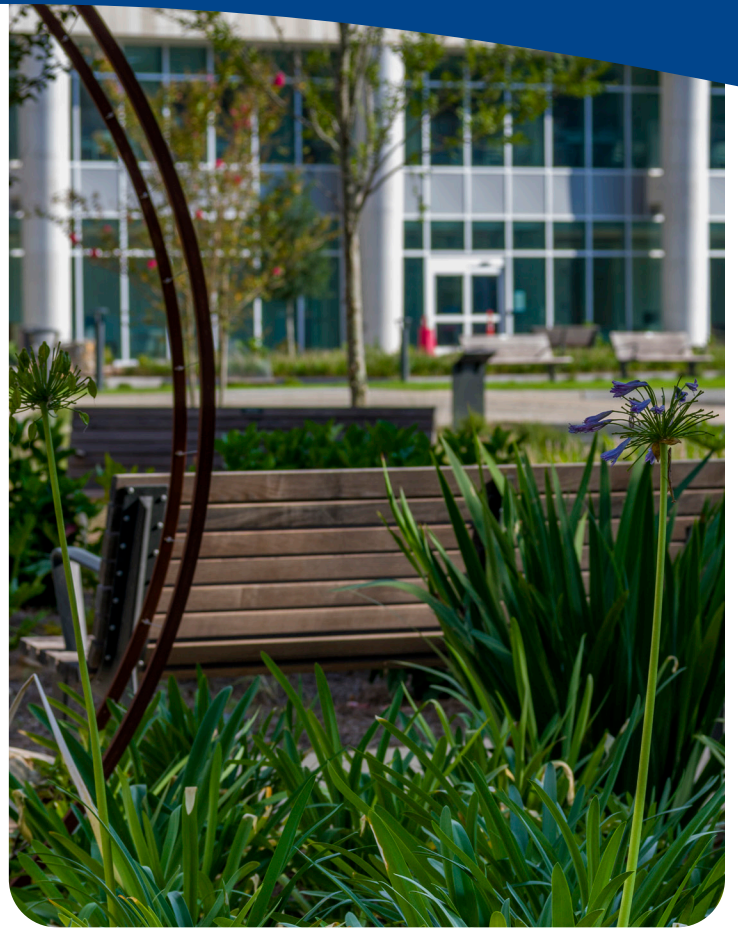
Meadows & Ohly — Program manager

Brasfield & Gorrie — General contractor

Smith Seckman and Reid — Equipment and technology planner

IMH Healthcare — Readiness and activation planning team

Beltmann — Moving and installation specialists





Transforming Health Care for our Community

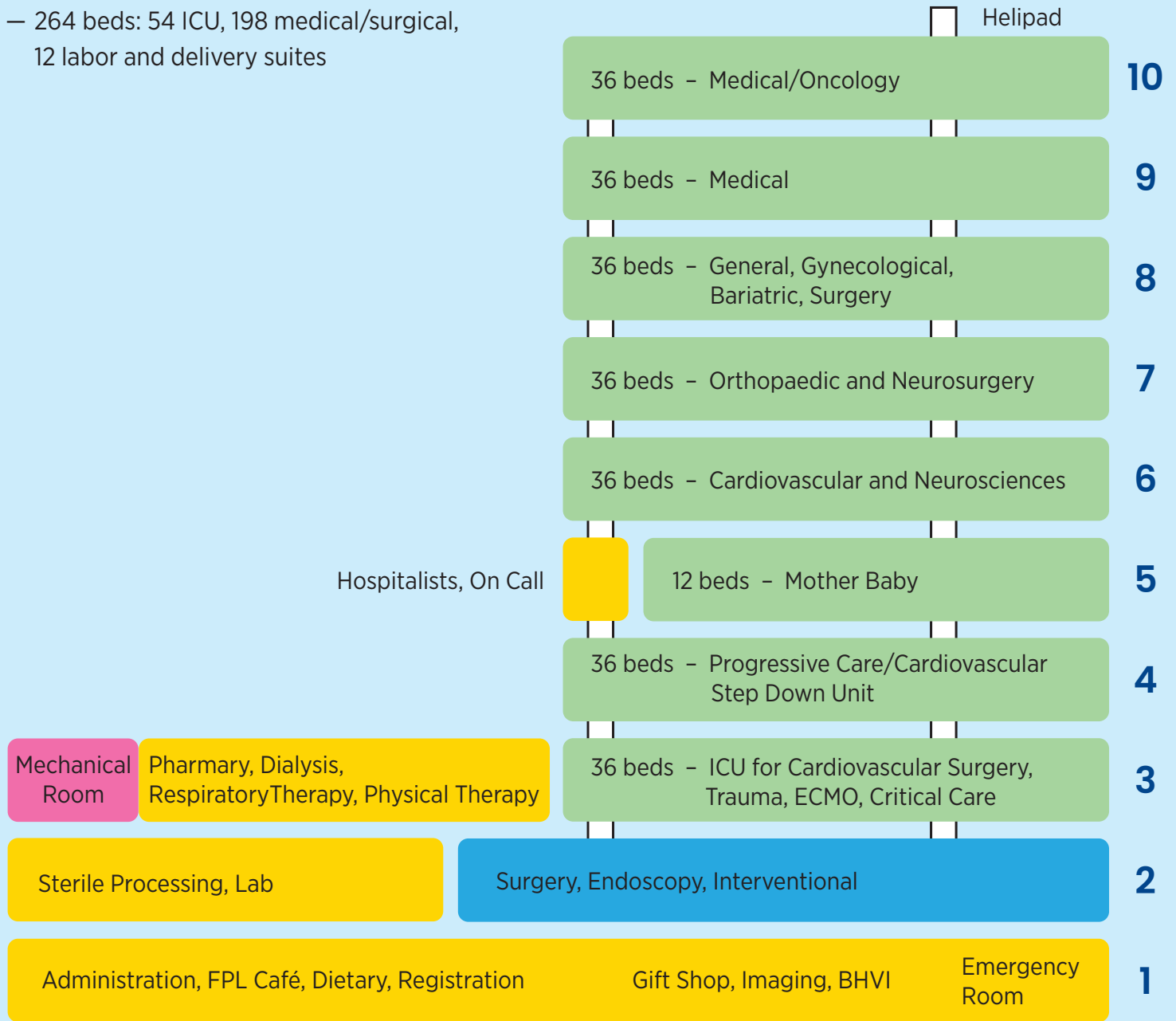
The new Baptist Hospital campus was born from a legacy of putting people first by advancing health care access, experience and outcomes for everyone. This ***bold transformation*** was not done alone. Through the generous support of our donors, the dedication of our skilled providers and the pursuit of excellence from our team members, we are able to bring the next generation of health care to our community. We are grateful to our donors and community partners for your support. You, too, can be a part of this historic opportunity. As the area's only locally led, not-for-profit health care system, Baptist Health Care relies on partnerships with passionate and generous individuals to help provide the right care in the right place for those who need it. Join us as we ***Transform Baptist for the Future***. To make a gift to the Baptist Health Care Foundation, please visit ***baptisthealthcarefoundation.org/give***.



New Baptist Hospital Campus at a Glance

Baptist Hospital | 123 Baptist Way, Pensacola, Florida

- 602,000 square feet
- 10 floors
- 264 beds: 54 ICU, 198 medical/surgical, 12 labor and delivery suites



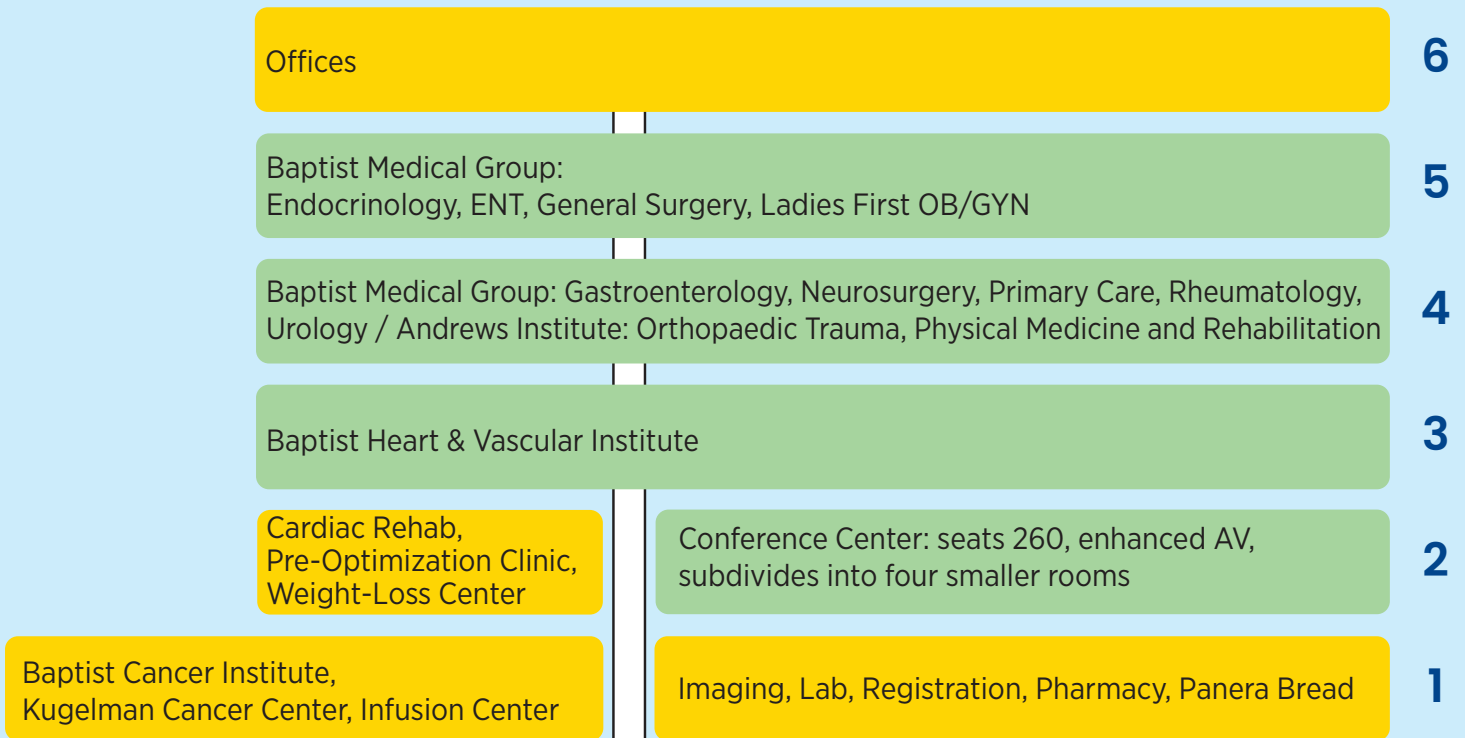
*Not Pictured

Henderson Health Center | 121 Baptist Way, Pensacola, Florida

- 80,000-square-foot building owned by Catalyst Inc. Opens early 2024.

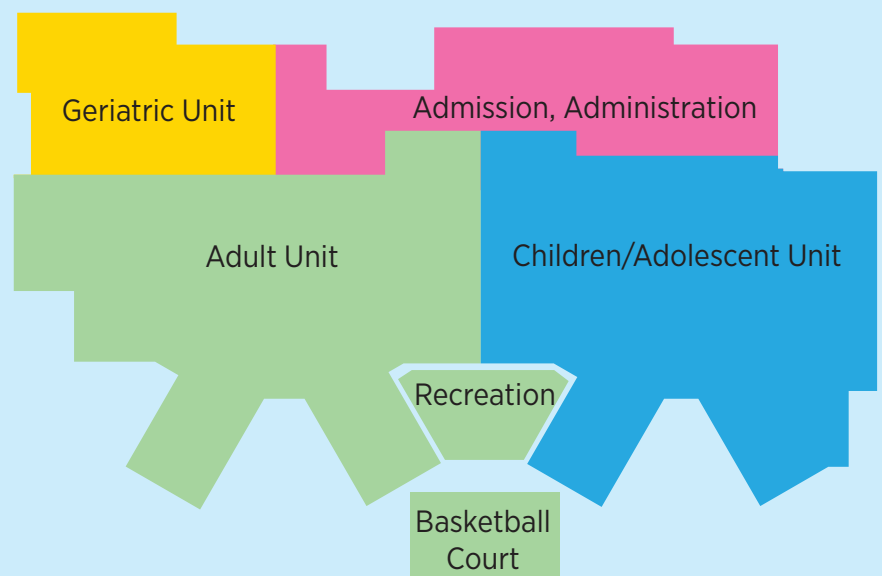
Bear Family Foundation Health Center | 125 Baptist Way, Pensacola, Florida

- 178,000 square feet
- 6 floors
- 162 exam rooms
- Multispecialty outpatient services
- Conference Center



Baptist Hospital Behavioral Health Unit | 305 Corday St., Pensacola, Florida

- Child, adolescent and adult inpatient behavioral health
- A department of Baptist Hospital
- 72 beds with the ability to adapt as needed to meet community needs
 - 36 for adults
 - 10 for geriatric patients
 - 14 for adolescents
 - 12 for children
 - Sensory Room
 - Day Rooms
 - Courtyard/Gardens
 - Playgrounds



Fun Facts

How is the campus equipped to withstand storms?

Two different electrical substations feed the campus, providing redundancy to power the hospital. In the event of an outage, an on-site backup generator provides off-grid power to the hospital and portions of the Bear Health Center.

If municipal water supply is disrupted, the hospital has a backup connection for a water tanker. Cooling towers and the irrigation systems are fed from rainwater reuse and underground wells – reducing the amount of potable water used on-site.

What are the fins on the sides of the buildings?

The fins are both functional and architectural features. They reduce solar gain by creating shadowing, thus reducing the heat produced within the room by the sun. They also offer texture and character.

What are the campus grounds like?

Heritage oak and magnolia trees serve as the centerpiece of the campus. Walking paths, park benches and tables are located in the picturesque surroundings. A chapel garden is located just outside the main hospital entrance and two healing gardens are in the town square.

What purpose do the lightwells serve?

Three lightwells beam sunshine into the hospital providing natural light to patients and team members.

Is there a bus stop at the new campus?

Baptist is providing a privately owned bus stop shelter, and ECAT created a new route to serve our campus. The bus shelter is not located on the busy roadway, but rather in the loop driveway leading onto the Baptist Hospital campus.

Why are all those dots on the windows?

To protect the birds! Birds do not perceive glass as a barrier in their flight pattern, so approximately 419,208 frit dots adorn the windows of the hospital and the Bear Family Foundation Health Center. The dots help the birds see the windows so they avoid flying into them.

How many miles of pneumatic tube is in the hospital?

To maximize efficiency and speed delivery of materials to and from floors, pharmacy, lab, imaging and other departments, 1.42 miles of pneumatic tubing was installed throughout the hospital.

How did lessons from COVID shape the design?

Additional investments were made to implement mechanical changes and enhancements to improve team member and patient safety.

- Half of the Emergency Room can be converted into negative pressure rooms while keeping the other half positive pressure.
- Fifteen rooms on the 9th floor can be converted into COVID suites.
- Isolation rooms on each inpatient floor have enhanced headwalls with additional medical gas and nurse call capability. A second bed can be added to the spacious rooms to double the isolation capacity if needed.





Our Journey Continues

Baptist Health Care’s new hospital campus is the latest and largest — but certainly not the last — investment to further our Mission of helping people throughout life’s journey. The idea of a new campus was just that for a long time. A daring idea – a bold dream – an audacious goal. It was the engagement of our patients, team members, physicians, providers, boards of directors, volunteers, donors, community members, partners and so many others that made our new campus a reality.

A quote in “The Making of Baptist Hospital” written by beloved local historian John Appleyard, published in 1976, speaks volumes of our founders’ work and applies to the efforts of the team today. “A small group saw a star and possessed too much zeal and compassion for their community to realize their goal was impossible . . . and so they reached it.”

Our founders began this journey more than 70 years ago. In continuing that journey, look at what we have accomplished together today – the creation of one of the most modern health care campuses in the nation. Imagine the ideas that will be brought to life by those who will carry on our Mission in the future.

What a blessing and a dream come true. We are honored and humbled to serve our community now and for generations to come.



BEAR FAMILY FOUNDATION HEALTH CENTER

